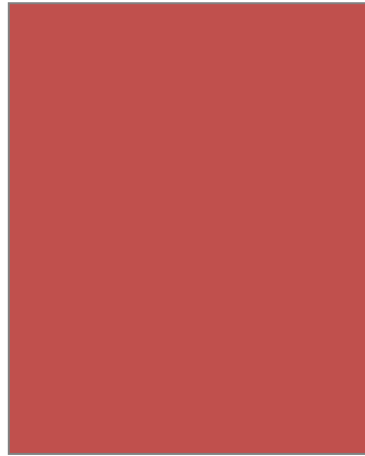
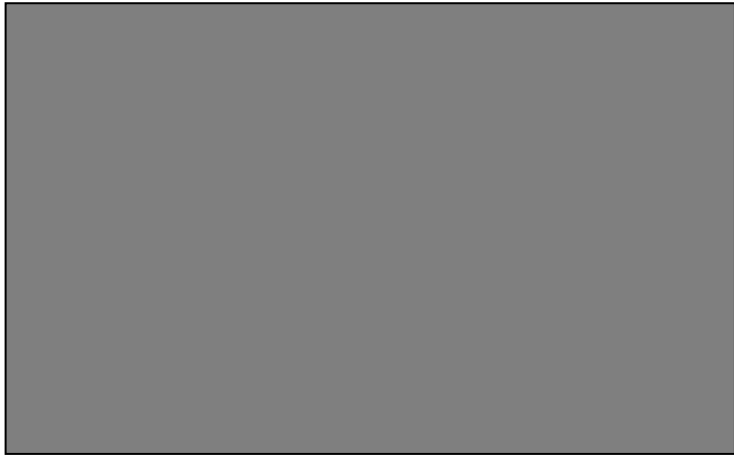
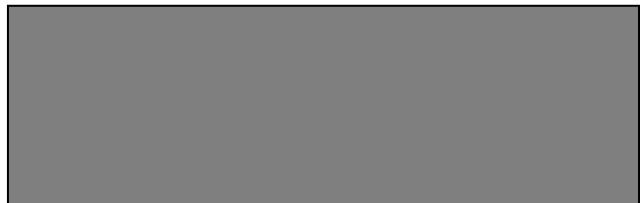


# Ohio Teacher Evaluation System



Model

2015



 **Ohio** | Department  
of Education

## TABLE OF CONTENTS

Preface.....	2
Definition of Teacher Effectiveness.....	4
OTES Model Organization.....	5
Teacher Evaluation Framework.....	6
Calculations for the Final Summative Rating.....	7
Combining Teacher Performance and Student Growth Measures.....	8
Student Growth Measures Percentages.....	10
Combination of Student Growth Measures.....	12
Important Terms and Definitions.....	13
Implementing the OTES Model.....	
Professional Growth Plan and Improvement Plan.....	15
Selection of Professional Growth Plan or Improvement Plan.....	16
Observation Process.....	17
Appendix A: Teacher Performance Rubric.....	19
Appendix B: Using Evidence to Perform Holistic Performance Ratings.....	25

## Preface

Over the past decade, Ohio has made important education policy advances, with a focus on student learning and achievement, standards and accountability, which together have moved Ohio's pre-kindergarten through 12<sup>th</sup> grade system forward in several important ways. Ohio is serious about its commitment to quality schools. The report of the Governor's Commission on Teaching Success was followed by the passage of Senate Bill 2 in 2004, which mandated the creation of the Educator Standards Board. The Board was charged with the creation of the *Ohio Standards for the Teaching Profession*, the *Ohio Standards for Principals* and the *Ohio Standards for Professional Development*.

House Bill 1 in 2009 directed the Educator Standards Board to recommend model evaluation systems for teachers and principals to the State Board of Education for their review and adoption. The Ohio Teacher Evaluation System (OTES) was created in response to this mandate and designed to be used to assess the performance of Ohio teachers.

The OTES was collaboratively developed by Ohio teachers, school administrators, higher education faculty, and representatives from Ohio's professional associations, in collaboration with national experts in the area of teacher evaluation. The scope of work of the Ohio Teacher Evaluation Writing Team during 2009-2011 included extensive study of model evaluation systems throughout the country. Many well-recognized state and district systems were examined in depth, including the District of Columbia Public Schools, Delaware, New Mexico, North Carolina, and Colorado. The nationally recognized work of Charlotte Danielson, Laura Goe, the New Teacher Center, and Learning Point Associates/American Institutes for Research (AIR) was utilized. This research and the collaboration of these national experts informed the components, processes, and tools included in the OTES. The OTES is designed to be research-based, transparent, fair and adaptable to the specific contexts of Ohio's districts (rural, urban, suburban, large, and small). The evaluation system builds on what we know about the importance of ongoing assessment and feedback as a powerful vehicle to support improved practice.

As districts design or revise their teacher evaluation system, the OTES will be used as a model. The evaluation of teachers as required in Ohio Revised Code 3319.111 and 3319.112 includes:

- Is aligned with the standards for teachers adopted under section 3319.61 of the Revised Code;
- Requires observation of the teacher being evaluated, including at least two formal observations by the evaluator of at least thirty minutes each and classroom walkthroughs;
- Assigns a rating on each evaluation conducted in accordance with the following levels of performance: accomplished, skilled, developing, or ineffective.
- Requires each teacher to be provided with a written report of the results of the teacher's evaluation;
- Implements a classroom-level, Value-Added program developed by a nonprofit organization as described in division (B) of section 3302.021 of ORC;
- Identifies measures of student academic growth for grade levels and subjects for which the value-added progress dimension prescribed by section 3302.021 of the Revised Code does not apply;
- Provides for professional development to accelerate and continue teacher growth and provide support to poorly performing teachers; and
- Provides for the allocation of financial resources to support professional development.
- Requires teachers holding a teaching license and spending at least fifty percent of the time employed providing student instruction to be evaluated under OTES.
- Requires an evaluation of every teacher who is on full evaluation to be completed by May 1 and a written report provided to the teacher by May 10, depending on the teacher's contract status.
- Provides options for less frequent evaluation of teachers who received skilled and accomplished ratings from the previous school year, while still providing them with feedback on their work.

- Provides districts a choice between a new alternative teacher evaluation structure (Ohio Revised Code 3319.114) and the current (original) structure (ORC 3319.112). The alternative structure for 2014-15 includes a third measure as 15 percent of the evaluation, with the remaining portion divided equally between performance on standards and student growth measures. Beginning in 2015-2016, districts selecting the Alternative Framework must choose weights in eTPES for the teacher performance and student growth within a range of 42.5% to 49%, while maintaining an equal percentage for each. The district identified alternative component will make up the remaining percentage.

## Definition of Teacher Effectiveness

After conducting extensive research, the following definition of teacher effectiveness was developed by educational practitioners in Ohio and is reinforced by *Ohio's Standards for the Teaching Profession*. The research supports the direct connection between effective teaching and high student achievement. Inherent in this definition is the expectation that all students will demonstrate a minimum of one year of growth based on standard and reliable measures.

### Effective teachers:

- Understand student learning and development, respect the diversity of the students they teach, and hold high expectations for all students to achieve and progress at high levels;
- Know and understand the content areas for which they have instructional responsibility;
- Understand and use varied assessments to inform instruction, and evaluate and ensure student learning;
- Plan and deliver effective instruction that advances the learning of each individual student;
- Create a learning environment that promotes high levels of student learning and achievement for all students;
- Collaborate and communicate with students, parents, other teachers, administrators and the community to support student learning; and
- Assume responsibility for professional growth and performance as an individual and as a member of a learning community.

The OTES model is designed to provide support for the implementation of the State Board of Education approved framework. It is representative of three years of committee work that included a field test and pilot. This model is a professional growth model and is intended to be used to continually to assist educators in improving teacher performance. This process is to be collaborative and in support of the teacher.

Information contained in this model is organized to address:

- Teacher Performance
- Student Growth Measures
- Combining Teacher Performance and Student Growth Measures
- Implementing the OTES model
- Teacher Performance Evaluation Rubric
- Using Evidence to Inform Holistic Ratings

## Teacher Evaluation Framework

### Teacher Performance

Teacher performance is determined by using a rating rubric (***Teacher Performance Evaluation Rubric***) consisting of indicators based on the *Ohio Standards for the Teaching Profession*. The evaluation process requires the evaluator to use evidence gathered in a variety of avenues (professional growth or improvement plan, observations, walkthroughs, and conferences) to determine a teacher performance rating.

### Student Growth Measures

A major percentage of each teacher's evaluation comes from how much their students learn throughout the year. Student growth measures are a method for determining how much academic progress students are making by measuring growth between two points in time.

### Original Framework

The original Teacher Evaluation Framework, adopted by the State Board of Education in 2012, described the multiple factors in teacher evaluation and attributed equal weights of 50% for Teacher Performance and 50% to Student Growth Measures.

### Alternative Framework

Due to changes in Substitute Ohio House Bill 362, school districts have the option to make changes in their teacher evaluation framework beginning in the 2014-2015 school year. This change in law allows districts to choose between the current (original) teacher evaluation structure (based on teacher performance rating and student growth rating, each at 50 percent) – and a new alternative teacher evaluation structure. The alternative framework for 2014-15 includes student growth and teacher performance at 42.5 percent each, as well as an additional measure as 15 percent of the evaluation. Beginning in 2015-2016, districts selecting the Alternative Framework must choose weights in eTPES for the teacher performance and student growth within a range of 42.5% to 49%, while maintaining an equal percentage for each. The district identified alternative component will make up the remaining percentage.

## Calculations for the Final Summative Rating

Recent legislative changes in Ohio House Bill 362 include an alternative framework for teacher evaluation that allows up to 15 percent of a teacher's rating to be based on one approved alternative component: student surveys, teacher self-evaluations, peer-review evaluations, or student portfolios. Like the original teacher evaluation framework, which districts may still use, the alternative framework assigns teacher performance and student growth an equal weight in determining final summative ratings.

The alternative framework requires a new structure for scoring teacher evaluations. As such, Ohio is now using a formula-based approach based on a 600-point scale on a consistent basis for all teachers, including those whose districts select the original framework, and those who choose the alternative framework of the Ohio Teacher Evaluation System. The formula will be incorporated into the eTPES calculations.

### Original Framework (50%, 50%) Ratings and Points

• Most Effective (5)	600	• Accomplished (4)	600	• Accomplished	500-600
• Above Average (4)	400	• Skilled (3)	400	• Skilled	300-499
• Average (3)	300	• Developing (2)	200	• Developing	100-299
• Approaching Average (2)	200	• Ineffective (1)	0	• Ineffective	0-99
• Below Average (1)	0				

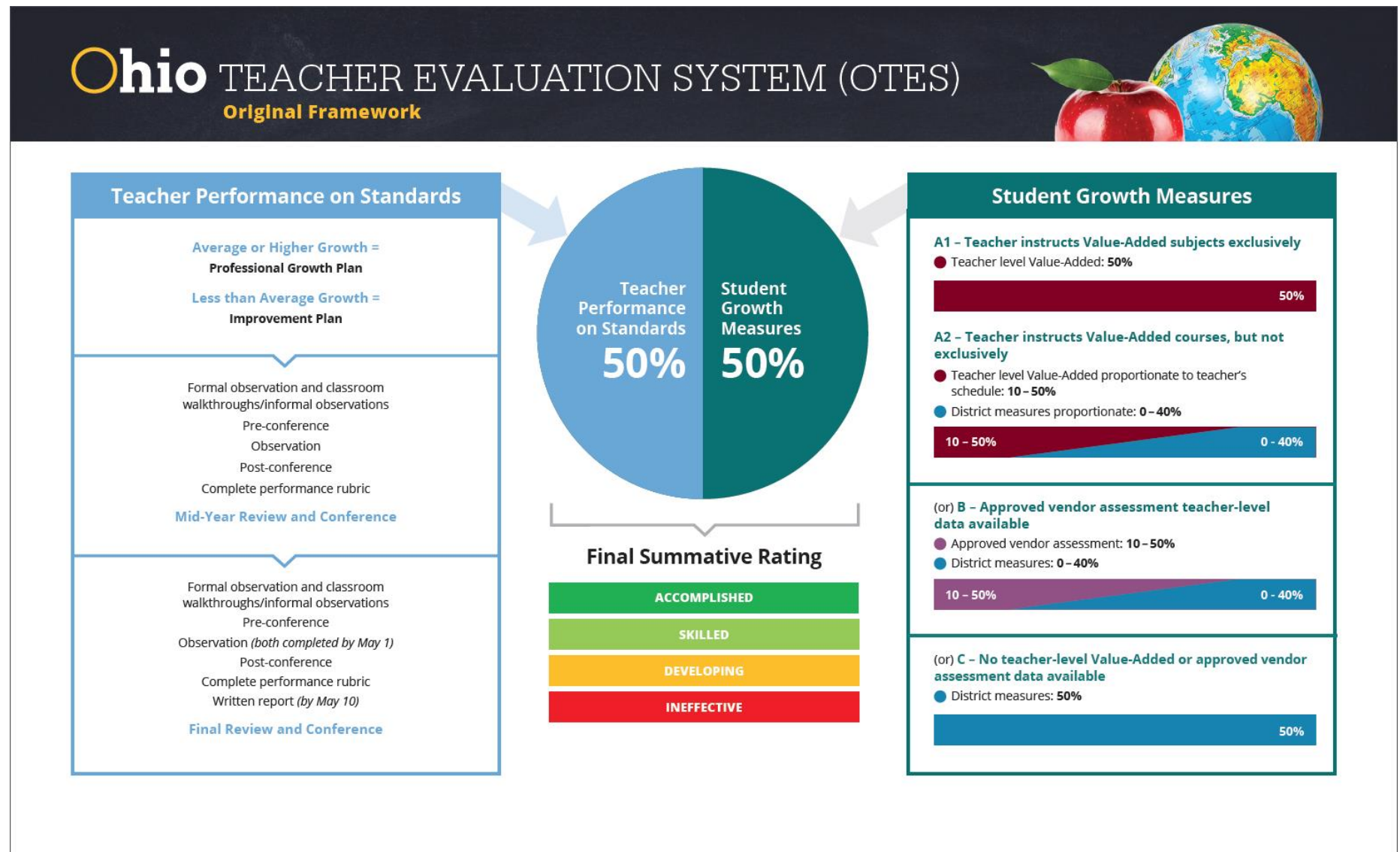
### Alternative Framework (42.5%, 42.5%, 15%) Ratings and Points

• Most Effective (5)	600	• Accomplished (4)	600	• Level 4	600	• Accomplished	500-600
• Above Average (4)	400	• Skilled (3)	400	• Level 3	400	• Skilled	300-499
• Average (3)	300	• Developing (2)	200	• Level 2	200	• Developing	100-299
• Approaching Average (2)	200	• Ineffective (1)	0	• Level 1	0	• Ineffective	0-99
• Below Average (1)	0						

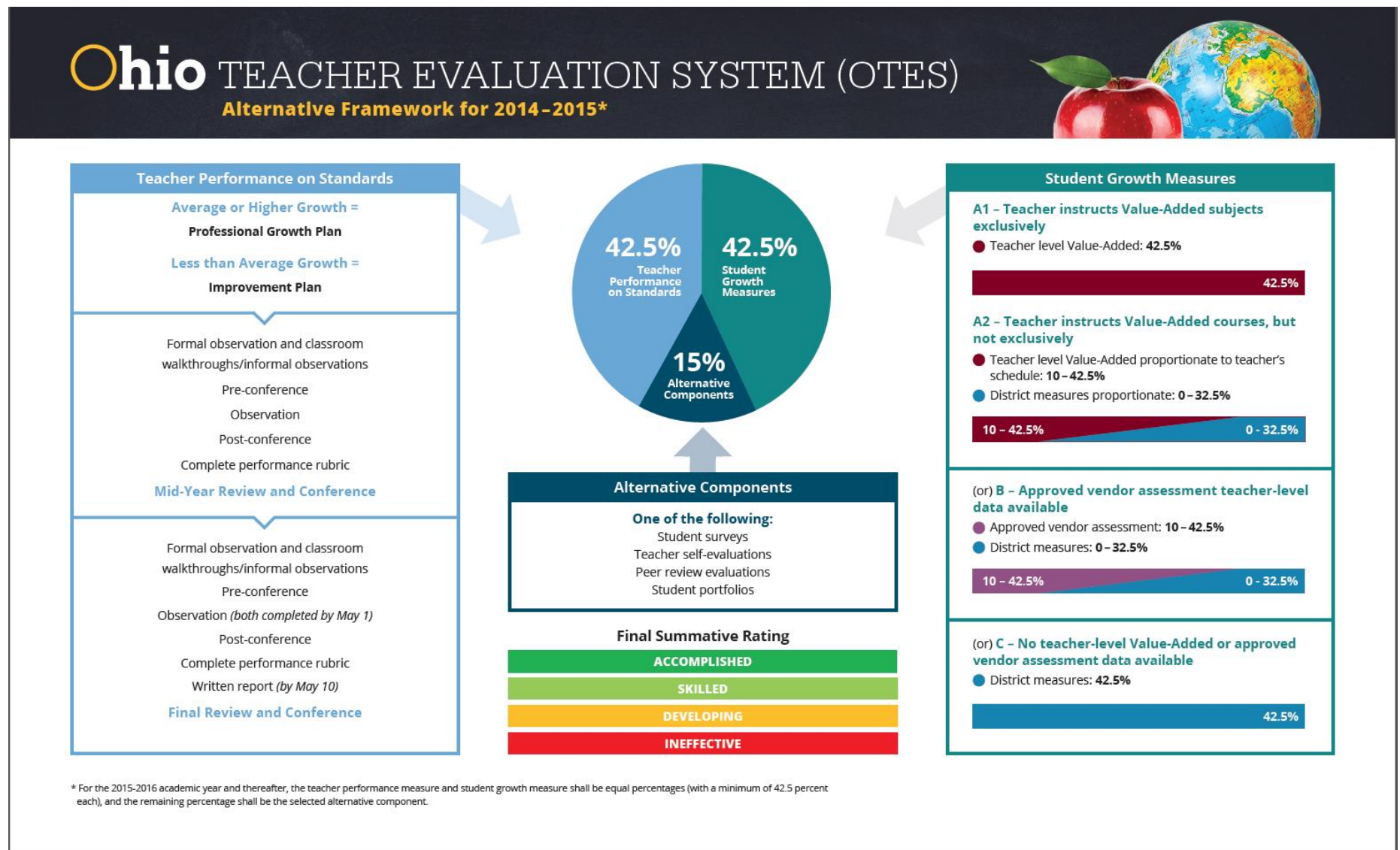
**NOTE:** The graphics on the next two pages illustrate how the Teacher Performance on the Standards, the Student Growth Measures, and the Alternative components (if selected by the district) are combined to produce the Final Summative Rating for each teacher.



### Original Framework



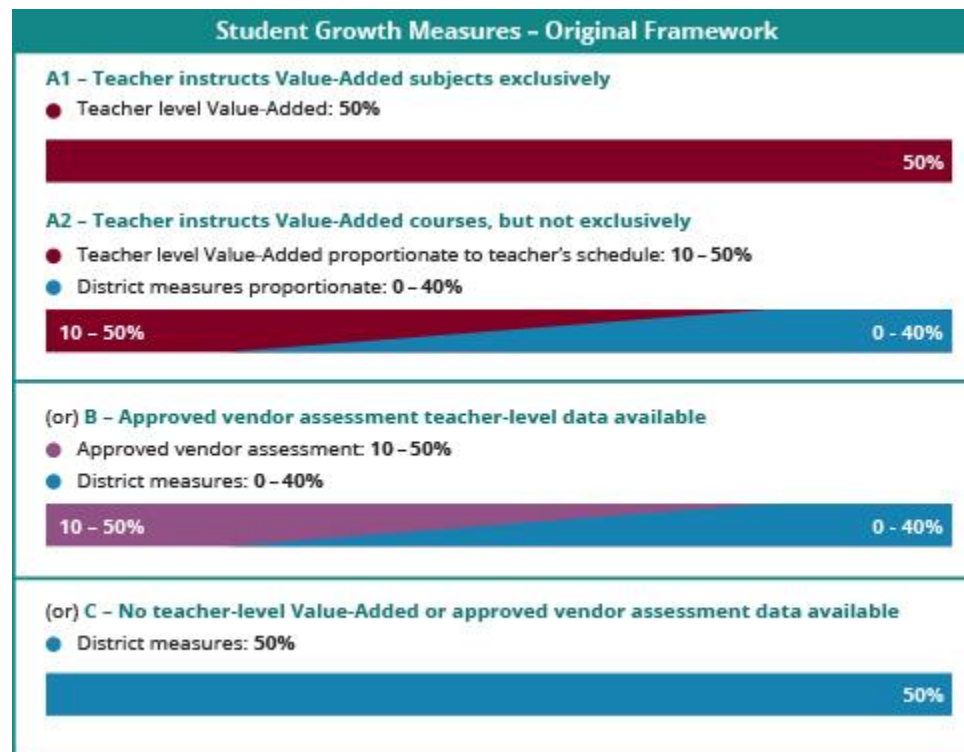
### Alternative Framework



## Student Growth Measures Percentages

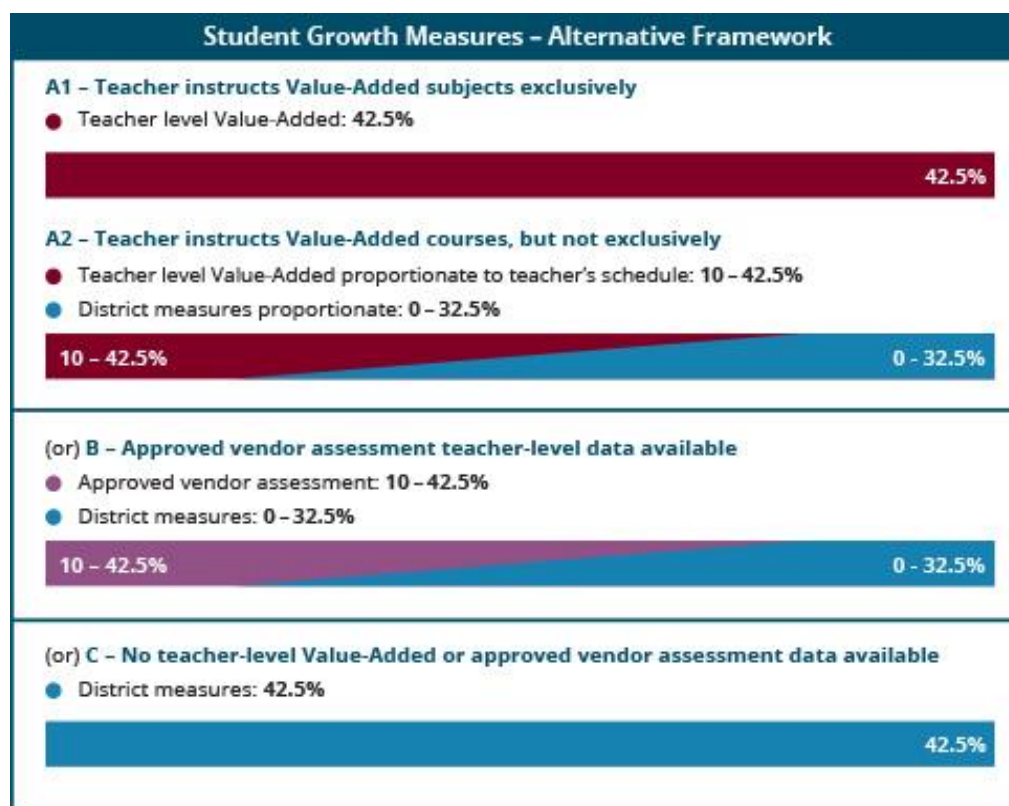
The percentages for student growth measure components in the original framework are pictured below.

### ORIGINAL STRUCTURE - STUDENT GROWTH MEASURE PERCENTAGES



The percentages for student growth measure components in the alternative framework are pictured below.

### ALTERNATIVE STRUCTURE - STUDENT GROWTH MEASURE PERCENTAGES



The following table describes three types of student growth measures, including legislative requirements and district options. Percentages are based on the original 50/50 framework.

A	Teacher Value-Added	<ul style="list-style-type: none"> <li>• MUST use if available</li> <li>• A1: 50% when the teacher <i>only</i> instructs Value-Added courses/subjects <ul style="list-style-type: none"> <li>◦ Requirement begins on or after July 1, 2014.</li> </ul> </li> <li>• A2: Otherwise, percentage is proportionate to the teacher's schedule in terms of Value-Added courses/subjects and other courses/subjects. <ul style="list-style-type: none"> <li>◦ Required to use Value-Added at <i>least</i> proportionately from 10-50%.</li> </ul> </li> <li>• EVAAS Value-Added metric from state assessments, aggregated across grades and subjects, including up to three years of data into multi-year composite report.</li> </ul>
B	Approved Vendor Assessments	<ul style="list-style-type: none"> <li>• MUST use if district has assessment in place and data available according to the Vendor's requirements.</li> <li>• 10-50% if applicable and no Value-Added data available.</li> <li>• Two types of Vendor Assessment measures: <ul style="list-style-type: none"> <li>◦ Extended EVAAS reporting utilizing vendor assessments such as Terra Nova, ACT End-of-Course, NWEA MAP, and STAR, or;</li> <li>◦ Vendor-based measures from assessments on ODE-Approved List published on the ODE website.</li> </ul> </li> </ul>
C	Locally Determined Measures	<ul style="list-style-type: none"> <li>• Teacher Category A2: MAY use in proportion to the teacher's schedule, 0-40%.</li> <li>• Teacher Category B: MAY use depending on District decisions, 0-40%.</li> <li>• Teacher Category C: MUST use for 50%.</li> <li>• Three types of Locally Determined Measures <ul style="list-style-type: none"> <li>◦ <b>Student Learning Objective (SLO)</b> process for measures that are specific to relevant subject matter. Measures must be district-approved and may include: <ul style="list-style-type: none"> <li>▪ Other vendor assessments not on the ODE-Approved List</li> <li>▪ Career Technical Educational assessments not on the ODE-Approved List</li> <li>▪ Locally determined assessments</li> <li>▪ Performance-based assessments</li> <li>▪ Portfolios</li> </ul> </li> <li>◦ <b>Shared Attribution</b> measures to encourage collaborative goals and may include: <ul style="list-style-type: none"> <li>▪ Building or District Value-Added is recommended if available;</li> <li>▪ Building teams (such as content and specialized areas) may utilize a composite Value-Added score</li> <li>▪ Building or District-based SLOs.</li> </ul> </li> <li>◦ Teacher Category A2 (with Value-Added) may also use <b>Vendor assessments</b> as a District-determined measure proportionate to the teacher's schedule for non-Value-Added courses/subjects.</li> </ul> </li> </ul>

### Why measure student growth?

According to the National Comprehensive Center for Teacher Quality (NCCTQ), the focus on evaluating educators by measuring growth rather than attainment is fairer to teachers and principals whose students enter classrooms well below grade level. These measures have the potential to inform instruction, build stakeholder commitment, provide a critical dimension to the assessment of teacher effectiveness, and, most important, improve student performance across a broader set of expectations.

### Important terms and definitions

**Student growth.** For the purpose of use in evaluation systems, student growth is defined as *“the change in student achievement for an individual student between two or more points in time”* (excerpted from *Measuring Student Growth for Teachers in Non-Tested Grades and Subjects: A Primer*) (n.d.). Retrieved October 15, 2014 from [http://nassauboecs.org/cms/lib5.ny18000988/centricity/domain/156/nts\\_primer\\_final.pdf](http://nassauboecs.org/cms/lib5.ny18000988/centricity/domain/156/nts_primer_final.pdf).

**Tested grades and subjects.** The US Department of Education (USD OE) defines “tested grades and subjects” as *those covered by the state’s assessment under the ESEA* and “non-tested grades and subjects” as *those without such data*.

**Value-Added.** In Ohio, Value-Added refers to the EVAAS Value-Added methodology, provided by SAS Inc. This is distinct from the more generic use of the term “value added” which can represent a variety of statistical modeling techniques. The Ohio, EVAAS Value-Added measure of student progress at the district and school level has been a component of the Ohio Accountability system for several years. Ohio’s Race to the Top plan provided for the expansion of Value-Added to the teacher-level. Value-Added calculations utilize data from the state-tested subjects and grades, as applicable. Additionally, the EVAAS data reporting system has added several features to help educators use this important data. The Ohio Department of Education provides professional development and other related services across the state.

**ODE Approved Vendor Assessment.** HB 153 requires the Ohio Department of Education to develop a list of student assessments that measure mastery of the course content for the appropriate grade levels which may include nationally normed standardized assessments, industry certification examinations, or end-of-course examinations for grade levels and subjects for which the Value-Added measure does not apply (the non-tested grades). ODE periodically releases a Request for Qualifications (RFQ) so interested vendors can demonstrate that assessments qualify for use in Ohio’s schools. The list of approved assessments is maintained and updated by ODE.

**Student Learning Objectives (SLOs).** A student learning objective is a measurable, long-term academic growth target that a teacher sets at the beginning of the year for all students or subgroups of students. Student learning objectives demonstrates a teacher’s impact on student learning.

**Shared Attribution.** Shared attribution measures are student growth measures that can be attributed to a group, including a district, building, department or grade-level team. These measures encourage collaborative goals and may be used as data in the student growth component.

**Multiple measures.** The teacher evaluation framework is based on multiple measures of performance and student growth. It is important that the holistic evaluation rating consider multiple factors across time. Accordingly, there are multiple measures within teacher performance and student growth, within and across years. The student growth measures may include data from multiple assessments and subjects.

**Teacher Value-Added.** By methodological definition Teacher-level Value-Added includes multiple measures on multiple levels. First, the EVAAS methodology incorporates student test histories (across all state-tested subjects) in determining growth metrics. Second, Value-Added creates effectiveness ratings for each tested grade and subject, as well as an aggregate composite rating. For example and analogous to Value-Added on the Local Report Card, a fifth grade teacher may have a Value-Added rating for fifth grade mathematics, a separate rating for fifth grade reading, and an overall composite rating. The composite rating is used for teacher effectiveness in the



student growth measure portion of evaluation. Third, the Value-Added metric eventually rolls into a multi-year trend including up to three years of data when available so that multiple years of multiple measures are represented.

## Professional Growth Plan or Improvement Plan Processes

A Professional Growth Plan or an Improvement Plan is based on Student Growth Measures as designated on the OTES Final Summative Rating and/ or performance on the standards as noted in the teacher performance rubric provided later in this section.

Above Average Growth	Average Growth	Approaching Average or Least Effective	Description of Requirements for Professional Growth or Improvement Plan
✓	✓		Growth Plan
		✓	Improvement Plan
✓			Self-Directed by Teacher
	✓		Collaborative –Teacher and Evaluator
		✓	Directed by the Evaluator
✓	✓	✓	Professional Conversations
✓	✓	✓	Mid-Year Progress Check
✓	✓	✓	End-of-Year Evaluation



### Professional Conversations and Progress Checks

As the teacher and evaluator work together during the formative assessment process, scheduled conferences should take place several times during the year to provide opportunities for professional conversation or direction about performance, goals, progress, as well as supports needed. During the year, the evaluator and teacher should discuss opportunities for professional development that evolve as a result of the evaluation process. The professional growth plan will be evaluated through indicators as described in the teacher performance rubric.



### Selection of Appropriate Plan

Teachers who have a rating of Most Effective annually develop a self-directed Professional Growth Plan. Teachers who have a rating of Average or Above Average for student growth also develop a Professional Growth Plan. This is initiated by the teacher and is completed collaboratively with the evaluator. Evaluators of teachers who have below average student growth write an Improvement Plan for the teacher. In addition, teachers who have Ineffective ratings in any areas of performance or who have an overall Ineffective performance rating must have an Improvement Plan (see below). The teacher participates in the implementation of this plan.

### Professional Growth Plan

Professional Growth Plans help teachers focus on areas of professional development that will enable them to improve their practice. Teachers are accountable for the implementation and completion of the plan and should use the plan as a starting point for the school year. The Professional Growth Plan is intended to be one academic year in duration and may support the goals of the Individual Professional Development Plan- IPDP. The Professional Growth Plan is not intended to replace the IPDP. The Professional Growth Plan and process includes feedback from the evaluator as well as the teacher's self-assessment and student growth measures data while addressing the support needed to further the teacher's continuous growth and development. Professional development should be individualized to the needs of the teacher and students (based on available data), and specifically relate to the teacher's areas for growth as identified in the teacher's evaluation. The evaluator should recommend professional development opportunities, and support the teacher by providing resources (e.g., time, financial). The Professional Growth plan should be reflective of the data available and include:

- Identification of area(s) for future professional growth;
- Specific resources and opportunities to assist the teacher in enhancing skills, knowledge and practice;
- Outcomes that will enable the teacher to increase student learning and achievement.

### Improvement Plan

Improvement Plans are developed for a teacher by the evaluator in response to ineffective ratings in performance and/or below average student growth measures. The Improvement Plan is intended to identify specific areas for improvement of performance and for identifying guidance and support needed to help the teacher improve. [A plan of improvement may be initiated at any time during the evaluation cycle by the evaluator based on deficiencies in performance as documented by evidence collected by the evaluator.] District collective bargaining unit agreements should be consulted to determine additional conditions under which improvement plans are instituted. When an improvement plan is initiated by an administrator, it is the responsibility of the administrator to:

- Identify, in writing, the specific area(s) for improvement to be addressed in relationship to the Ohio Standards for the Teaching Profession;
- Specify, in writing, the desired level of performance that is expected to improve and a reasonable period of time to correct the deficiencies;
- Develop and implement a written plan for improvement that will be initiated immediately and includes resources and assistance available;
- Determine additional education or professional development needed to improve in the identified area(s); and
- Gather evidence of progress or lack of progress.

A reassessment of the educator's performance shall be completed in accordance with the written plan (multiple opportunities for observation of performance). Upon reassessment of the educator's performance, if improvement has been documented at an acceptable level of performance\*, the Professional Growth Plan may resume. If the teacher's performance continues to remain at an ineffective level, the supervising administrator may reinstate the improvement plan with additional recommendations for improvement or take the necessary steps to recommend dismissal.

\*Local negotiated agreement requirements should be consulted when developing Professional Growth Plans and Improvement Plans.

## Assessment of Teacher Performance

All teachers, at all stages of their careers, will be assessed on their expertise and performance—in the classroom and school setting. Teachers with a rating of Most Effective for student growth may choose their credentialed evaluator. Teachers with a rating of Average or Above Average for student growth will have input on their credentialed evaluator. Teachers with a rating of Approaching Average or Least Effective for student growth will be assigned the credentialed evaluator. A credentialed evaluator is one who:

- Possesses the proper certification/ licensure to be an evaluator or the district has deemed that peers may be evaluators or a person designated by the local Board of Education;
- has been approved as an evaluator by the local board of education;
- has completed a state-sponsored OTES training; and
- has passed an online assessment using the OTES rubric.



## The Formal Observation Process

Observations of teaching provide important evidence when assessing a teacher's performance and effectiveness. As an evaluator observes a teacher engaging students in learning, valuable evidence may be collected on multiple levels. As part of the formal observation process, on-going communication and collaboration between evaluator and teacher help foster a productive professional relationship that is supportive and leads to a teacher's professional growth and development. Based upon researched best practices, the formal observation process consists of a pre-conference, classroom observation (and walkthroughs), and a post-conference.

### Pre-Conference: Planning and observation of classroom teaching and learning

At the Pre-Conference, the evaluator and teacher discuss what the evaluator will observe during the classroom visitation. Important information is shared about the characteristics of the learners and learning environment. Specific information is also shared about the objectives of the lesson, and the assessment of student learning. The conference will also give the teacher an opportunity to identify areas in which she/he would like focused feedback from the evaluator during the classroom observation. The communication takes place during a formal meeting and a record of the date(s) should be kept. The purpose of the pre-observation conference is to provide the evaluator with an opportunity to discuss the following:

- Lesson or unit objective(s)
- Prior learning experiences of the students
- Characteristics of the learners/learning environment
- Instructional strategies that will be used to meet the lesson objectives
- Student activities and materials
- Differentiation based on needs of students
- Assessment (data) collected to demonstrate student learning

**NOTE:** The teacher and evaluator should set a time for the formal observation to take place, and re-negotiate this scheduled date and time as necessary if the observation is not conducted as planned.

**Formal Observation: Gathering evidence of teacher performance**

Teachers who are fully evaluated will participate in a minimum of two formal observations. Teachers who are being considered for non-renewal and have a limited or extended limited contract will participate in a minimum of three formal observations. A formal observation consists of a visitation of a class period or the viewing of a class lesson. The observation should be conducted for an entire class period, lesson, or a minimum of 30 minutes. During the classroom observation, the evaluator documents specific information related to teaching and learning. Each formal observation will be analyzed by the evaluator using the **Teacher Performance Evaluation Rubric**. A narrative will then be completed by the evaluator to document each formal observation. The results of each formal observation are reviewed with the teacher during the post-observation conference. Formal observations will not include videotaping or sound recordings except with the written permission of the teacher.

**Classroom walkthroughs** are informal observations less than 30 minutes. These may occur frequently and may be unannounced.

**Post-Conference: Reflection, Reinforcement, and Refinement**

The purpose of the post-observation conference is to provide reflection and feedback on the observed lesson and to identify strategies and resources for the teacher to incorporate into lessons to increase effectiveness. Following the lesson, the teacher reflects on the lesson and how well the student learning outcomes were met. Professional conversations between the evaluator and the teacher during the post-conference will provide the teacher with feedback on the observed lesson, and may identify additional strategies and resources. The evaluator will make recommendations and commendations which may become part of the teacher's professional development plan.

In general, the discussion between the evaluator and teacher needs to focus on relative area(s) of strength (reinforcement), and relative area(s) for further support (refinement). Teachers may bring additional evidence that supports the lesson observed to share with the evaluator at the conference. The evaluator may consider these as evidence of student learning or evidence to support the teacher's performance.

**Combining Measures to Obtain a Holistic Rating**

A strong teacher evaluation system calls for ongoing collaboration and honest conversation between teachers and their evaluators. The foundation of such a system is the transparent, two-way gathering and sharing of evidence that informs the teacher performance ratings at the end of the year. Some teacher behaviors are observable in the classroom while other evidence may include formal conferences, informal conversations, evidence of practice, as well as colleague, parent and student input. The model Ohio Teacher Evaluation System describes opportunities for the teacher and evaluator to discuss evidence, build a common understanding of the teacher's current practice, and identify areas for future growth. Regular check-ins also help the evaluator manage the administrative burden of gathering and organizing evidence by sharing the responsibility with the teacher and encouraging evaluators to document teacher practices as they occur.

**Suggestions for Conducting the Post-Conference**

1. Introduction/Greeting/Establish Length
  - Review Conference Process
  - General Impression Question
  - “How do you think the lesson went?”
2. Reinforcing the Teacher (Area of Relative Strength)
  - Identify an area of Reinforcement (ONLY one area)
  - Ask Self-Analysis Question
  - Provide evidence from notes
3. Refining the Teacher's Skill: (Area of Further Support)
  - Identify an area of Refinement (ONLY one area)
  - Ask Self-Analysis Question
  - Provide evidence from notes
  - Give a recommendation for future practice
4. Present evidence and rating connected to the rubric

*For suggested step-by-step guidance to review and analyze multiple data points that inform ratings, please see: **Using Evidence to Inform Holistic Performance Ratings**.*

## Ohio Teacher Evaluation System Model

## Teacher Performance Rubric

## Teacher Performance Evaluation Rubric

The **Teacher Performance Evaluation Rubric** is intended to be scored holistically. This means that evaluators will assess which level provides the best *overall* description of the teacher. The scoring process is expected to occur upon completion of each thirty (30) minute observation and post-conference. The evaluator is to consider evidence gathered during the pre-observation conference, the observation, the post-observation conference, and classroom walkthroughs (if applicable). When completing the performance rubric, please note that evaluators are not expected to gather evidence on all indicators for each observation cycle. Likewise, teachers should not be required to submit additional pieces of evidence to address all indicators. The professionalism section of the rubric may use evidence collected during the pre-observation and post-observation conferences as well as information from the Professional Growth and/or Improvement Plan (if applicable).

INSTRUCTIONAL PLANNING					
		Ineffective	Developing	Skilled	Accomplished
INSTRUCTIONAL PLANNING	<b>FOCUS FOR LEARNING</b> <b>(Standard 4: Instruction)</b>  <i>Sources of Evidence:</i> Pre-Conference	The teacher does not demonstrate a clear focus for student learning. Learning objectives are too general to guide lesson planning and are inappropriate for the students, and/or do not reference the Ohio standards.	The teacher communicates a focus for student learning, develops learning objectives that are appropriate for students and reference the Ohio standards but do not include measurable goals.	The teacher demonstrates a focus for student learning, with appropriate learning objectives that include measurable goal(s) for student learning aligned with the Ohio standards. The teacher demonstrates the importance of the goal and its appropriateness for students.	The teacher establishes challenging and measurable goal(s) for student learning that aligns with the Ohio standards and reflect a range of student learner needs. The teacher demonstrates how the goal(s) fit into the broader unit, course, and school goals for content learning and skills.
	<b>ASSESSMENT DATA</b> <b>(Standard 3: Assessment)</b>  <i>Sources of Evidence:</i> Pre-Conference	The teacher does not plan for the assessment of student learning or does not analyze student learning data to inform lesson plans.  The teacher does not use or only uses one measure of student performance.	The teacher explains the characteristics, uses, and limitations of various diagnostic, formative, and summative assessments but does not consistently incorporate this knowledge into lesson planning.  The teacher uses more than one measure of student performance but does not appropriately vary assessment approaches, or the teacher may have difficulty analyzing data to effectively inform instructional planning and delivery.	The teacher demonstrates an understanding that assessment is a means of evaluating and supporting student learning through effectively incorporating diagnostic, formative, and/or summative assessments into lesson planning.  The teacher employs a variety of formal and informal assessment techniques to collect evidence of students' knowledge and skills and analyzes data to effectively inform instructional planning and delivery.	The teacher purposefully plans assessments and differentiates assessment choices to match the full range of student needs, abilities, and learning styles, incorporating a range of appropriate diagnostic, formative, and summative assessments into lesson plans.  Student learning needs are accurately identified through an analysis of student data; the teacher uses assessment data to identify student strengths and areas for student growth.

INSTRUCTIONAL PLANNING					
		Ineffective	Developing	Skilled	Accomplished
INSTRUCTIONAL PLANNING	<b>PRIOR CONTENT KNOWLEDGE / SEQUENCE / CONNECTIONS</b> (Standard 1: Students; Standard 2: Content; Standard 4: Instruction)  <i>Sources of Evidence:</i> Pre-Conference	The teacher's lesson does not build on or connect to students' prior knowledge, or the teacher may give an explanation that is illogical or inaccurate as to how the content connects to previous and future learning.	The teacher makes an attempt to connect the lesson to students' prior knowledge, to previous lessons or future learning but is not completely successful.	The teacher makes clear and coherent connections with students' prior knowledge and future learning—both explicitly to students and within the lesson.          The teacher plans and sequences instruction to include the important content, concepts, and processes in school and district curriculum priorities and in state standards.	The teacher uses the input and contributions of families, colleagues, and other professionals in understanding each learner's prior knowledge and supporting their development. The teacher makes meaningful and relevant connections between lesson content and other disciplines and real-world experiences and careers as well as prepares opportunities for students to apply learning from different content areas to solve problems.          The teacher plans and sequences instruction that reflects an understanding of the prerequisite relationships among the important content, concepts, and processes in school and district curriculum priorities and in state standards as well as multiple pathways for learning depending on student needs. The teacher accurately explains how the lesson fits within the structure of the discipline.
	<b>KNOWLEDGE OF STUDENTS</b> (Standard 1: Students)  <i>Sources of Evidence:</i> Analysis of Student Data Pre-Conference	The teacher demonstrates a lack of familiarity with students' backgrounds and has made no attempts to find this information.          The teacher's plan for instruction does not demonstrate an understanding of students' development, preferred learning styles, and/or student backgrounds/prior experiences.	The teacher demonstrates some familiarity with students' background knowledge and experiences and describes one procedure used to obtain this information.          The teacher's instructional plan draws upon a partial analysis of students' development, readiness for learning, preferred learning styles, or backgrounds and prior experiences and/or the plan is inappropriately tailored to the specific population of students in the classroom.	The teacher demonstrates familiarity with students' background knowledge and experiences and describes multiple procedures used to obtain this information.          The teacher's instructional plan draws upon an accurate analysis of the students' development, readiness for learning, preferred learning styles, and backgrounds and prior experiences.	The teacher demonstrates an understanding of the purpose and value of learning about students' background experiences, demonstrates familiarity with each student's background knowledge and experiences, and describes multiple procedures used to obtain this information.          The teacher's analysis of student data (student development, student learning and preferred learning styles, and student backgrounds/prior experiences) accurately connects the data to specific instructional strategies and plans.          The teacher plans for and can articulate specific strategies, content, and delivery that will meet the needs of individual students and groups of students.

Instruction and Assessment						
INSTRUCTION AND ASSESSMENT			Ineffective	Developing	Skilled	Accomplished
	<b>LESSON DELIVERY</b> <b>(Standard 2: Content; Standard 4: Instruction; Standard 6: Collaboration and Communication)</b>		A teacher’s explanations are unclear, incoherent, or inaccurate, and are generally ineffective in building student understanding. The teacher uses language that fails to engage students, is inappropriate to the content, and/or discourages independent or creative thinking.	Teacher explanations are accurate and generally clear but the teacher may not fully clarify information based on students’ questions about content or instructions for learning activities or the teacher may use some language that is developmentally inappropriate, leading to confusion or limiting discussion.	Teacher explanations are clear and accurate. The teacher uses developmentally appropriate strategies and language designed to actively encourage independent, creative, and critical thinking.	Teacher explanations are clear, coherent, and precise. The teacher uses well-timed, individualized, developmentally appropriate strategies and language designed to actively encourage independent, creative, and critical thinking, including the appropriate use of questions and discussion techniques.
	<i>Sources of Evidence:</i> Formal Observation Classroom Walkthroughs/ Informal Observations		The teacher fails to address student confusion or frustration and does not use effective questioning techniques during the lesson. The lesson is almost entirely teacher-directed.	The teacher re-explains topics when students show confusion, but is not always able to provide an effective alternative explanation. The teacher attempts to employ purposeful questioning techniques, but may confuse students with the phrasing or timing of questions. The lesson is primarily teacher-directed.	The teacher effectively addresses confusion by re-explaining topics when asked and ensuring understanding. The teacher employs effective, purposeful questioning techniques during instruction. The lesson is a balance of teacher-directed instruction and student-led learning.	The teacher accurately anticipates confusion by presenting information in multiple formats and clarifying content before students ask questions. The teacher develops high-level understanding through effective uses of varied levels of questions. The lesson is student-led, with the teacher in the role of facilitator.
	<b>DIFFERENTIATION</b> <b>(Standard 1: Students; Standard 4: Instruction)</b>		The teacher does not attempt to make the lesson accessible and challenging for most students, or attempts are developmentally inappropriate.	The teacher relies on a single strategy or alternate set of materials to make the lesson accessible to most students though some students may not be able to access certain parts of the lesson and/or some may not be challenged.	The teacher supports the learning needs of students through a variety of strategies, materials, and/or pacing that make learning accessible and challenging for the group.	The teacher matches strategies, materials, and/or pacing to students’ individual needs, to make learning accessible and challenging for all students in the classroom. The teacher effectively uses independent, collaborative and whole-class instruction to support individual learning goals and provides varied options for how students will demonstrate mastery.
	<i>Sources of Evidence:</i> Pre-Conference Formal Observation Classroom Walkthroughs/ Informal Observations					
<b>RESOURCES</b> <b>(Standard 2: Content; Standard 4: Instruction)</b>		Instructional materials and resources used for instruction are not relevant to the lesson or are inappropriate for students.	The teacher uses appropriate instructional materials to support learning goals, but may not meet individual students’ learning styles/needs or actively engage them in learning.	Instructional materials and resources are aligned to the instructional purposes and are appropriate for students’ learning styles and needs, actively engaging students.	Instructional materials and resources are aligned to instructional purposes, are varied and appropriate to ability levels of students, and actively engage them in ownership of their learning.	
<i>Sources of Evidence:</i> Pre-Conference Formal Observation Classroom Walkthroughs/ Informal Observations						

Instruction and Assessment					
		Ineffective	Developing	Skilled	Accomplished
INSTRUCTION AND ASSESSMENT	<b>CLASSROOM ENVIRONMENT</b> <b>(Standard 1: Students; Standard 5: Learning Environment; Standard 6: Collaboration and Communication)</b>  <i>Sources of Evidence:</i> Pre-Conference Formal Observation Classroom Walkthroughs/ Informal Observations	There is little or no evidence of a positive rapport between the teacher and students. For example, the teacher may respond disrespectfully to students or ignore their questions or comments.	The teacher is fair in the treatment of students and establishes a basic rapport with them. For example, the teacher addresses students' questions or comments but does not inquire about their overall well-being.	The teacher has positive rapport with students and demonstrates respect for and interest in all students. For example, the teacher makes eye contact and connects with individual students.	The teacher has positive rapport with students and demonstrates respect for and interest in individual students' experiences, thoughts and opinions. For example, the teacher responds quietly, individually, and sensitively to student confusion or distress.
		There are no evident routines or procedures; students seem unclear about what they should be doing or are idle.	Routines and procedures are in place, but the teacher may inappropriately prompt or direct students when they are unclear or idle.	Routines and procedures run smoothly throughout the lesson, and students assume age-appropriate levels of responsibility for the efficient operation of the classroom.	Routines are well-established and orderly and students initiate responsibility for the efficient operation of the classroom.
		Transitions are inefficient with considerable instructional time lost. Lessons progress too slowly or quickly so students are frequently disengaged.	The teacher transitions between learning activities, but occasionally loses some instructional time in the process.	Transitions are efficient and occur smoothly. There is evidence of varied learning situations (whole class, cooperative learning, small group and independent work).	Transitions are seamless as the teacher effectively maximizes instructional time and combines independent, collaborative, and whole-class learning situations.
		The teacher creates a learning environment that allows for little or no communication or engagement with families.	The teacher welcomes communication from families and replies in a timely manner.	The teacher engages in two-way communication and offers a variety of volunteer opportunities and activities for families to support student learning.	The teacher engages in two-way, ongoing communication with families that results in active volunteer, community, and family partnerships which contribute to student learning and development.
		Expectations for behavior are not established or are inappropriate and/or no monitoring of behaviors occurs. The teacher responds to misbehavior inappropriately.	Appropriate expectations for behavior are established, but some expectations are unclear or do not address the needs of individual students. The teacher inconsistently monitors behavior.	A classroom management system has been implemented that is appropriate and responsive to classroom and individual needs of students. Clear expectations for student behavior are evident. Monitoring of student behavior is consistent, appropriate, and effective.	A classroom management system has been designed, implemented, and adjusted with student input and is appropriate for the classroom and individual student needs. Students are actively encouraged to take responsibility for their behavior. The teacher uses research-based strategies to lessen disruptive behaviors and reinforce positive behaviors.

Instruction and Assessment					
		Ineffective	Developing	Skilled	Accomplished
INSTRUCTION AND ASSESSMENT	<b>ASSESSMENT OF STUDENT LEARNING (Standard 3: Assessment)</b>  <i>Sources of Evidence:</i> Pre-Conference Formal Observation Classroom Walkthroughs/ Informal Observations Post-Conference	The teacher does not routinely use assessments to measure student mastery.	The teacher uses assessments to measure student mastery, but may not differentiate instruction based on this information.	The teacher uses assessment data to identify students' strengths and needs, and modifies and differentiates instruction accordingly, although the teacher may not be able to anticipate learning obstacles.	The teacher uses assessment data to identify students' strengths and needs, and modifies and differentiates instruction accordingly, as well as examines classroom assessment results to reveal trends and patterns in individual and group progress and to anticipate learning obstacles.
		The teacher rarely or never checks the students' understanding of content. The teacher fails to make adjustments in response to student confusion.	The teacher checks for student understanding and makes attempts to adjust instruction accordingly, but these adjustments may cause some additional confusion.	The teacher checks for understanding at key moments and makes adjustments to instruction (whole-class or individual students). The teacher responds to student misunderstandings by providing additional clarification.	The teacher continually checks for understanding and makes adjustments accordingly (whole-class or individual students). When an explanation is not effectively leading students to understand the content, the teacher adjusts quickly and seamlessly within the lesson and uses an alternative way to explain the concept.
		The teacher persists in using a particular strategy for responding to misunderstandings, even when data suggest the approach is not succeeding.	The teacher gathers and uses student data from a few sources to choose appropriate instructional strategies for groups of students.	The teacher gathers and uses student data from a variety of sources to choose and implement appropriate instructional strategies for groups of students.	By using student data from a variety of sources, the teacher appropriately adapts instructional methods and materials and paces learning activities to meet the needs of individual students as well as the whole class.
		The teacher does not provide students with feedback about their learning.	Students receive occasional or limited feedback about their performance from the teacher.	The teacher provides substantive, specific, and timely feedback of student progress to students, families, and other school personnel while maintaining confidentiality.	The teacher provides substantive, specific, and timely feedback to students, families, and other school personnel while maintaining confidentiality. The teacher provides the opportunity for students to engage in self-assessment and show awareness of their own strengths and weaknesses. The teacher uses student assessment results to reflect on his or her own teaching and to monitor teaching strategies and behaviors in relation to student success.



Professionalism					
		Ineffective	Developing	Skilled	Accomplished
PROFESSIONALISM	<b>PROFESSIONAL RESPONSIBILITIES (Standard 6: Collaboration and Communication; Standard 7: Professional Responsibility and Growth)</b>  <i>Sources of Evidence:</i> Professional Development Plan or Improvement Plan; Pre-conference; Post-conference; daily interaction with others	The teacher fails to communicate clearly with students and families or collaborate effectively with professional colleagues.	The teacher uses a variety of strategies to communicate with students and families and collaborate with colleagues, but these approaches may not always be appropriate for a particular situation or achieve the intended outcome.	The teacher uses effective communication strategies with students and families and works effectively with colleagues to examine problems of practice, analyze student work, and identify targeted strategies.	The teacher communicates effectively with students, families, and colleagues. The teacher collaborates with colleagues to improve personal and team practices by facilitating professional dialogue, peer observation and feedback, peer coaching and other collegial learning activities.
		The teacher fails to understand and follow regulations, policies, and agreements.	The teacher understands and follows district policies and state and federal regulations at a minimal level.	The teacher meets ethical and professional responsibilities with integrity and honesty. The teacher models and upholds district policies and state and federal regulations.	The teacher meets ethical and professional responsibilities and helps colleagues access and interpret laws and policies and understand their implications in the classroom.
		The teacher fails to demonstrate evidence of an ability to accurately self-assess performance and to appropriately identify areas for professional development.	The teacher identifies strengths and areas for growth to develop and implement targeted goals for professional growth.	The teacher sets data-based short- and long-term professional goals and takes action to meet these goals.	The teacher sets and regularly modifies short-and long-term professional goals based on self-assessment and analysis of student learning evidence.

## Ohio Teacher Evaluation System Model

## Using Evidence to Inform Holistic Performance Ratings

**Defining the Performance Ratings**

In accordance with Ohio Revised Code 3319.112 the rubric describes four levels of teacher performance for each standard area. Each performance rating can also be described in more general terms, as a holistic rating of teacher performance:

<p><b>Ineffective:</b></p> <p>A rating of <i>Ineffective</i> indicates that the teacher consistently fails to demonstrate minimum competency in one or more teaching standards. There is little or no improvement over time. The teacher requires immediate assistance and needs to be placed on an improvement plan.</p>	<p><b>Developing:</b></p> <p>A rating of <i>Developing</i> indicates that the teacher demonstrates minimum competency in many of the teaching standards, but may struggle with others. The teacher is making progress but requires ongoing professional support for necessary growth to occur.</p>	<p><b>Skilled:</b></p> <p>A rating of <i>Skilled</i> indicates that the teacher consistently meets expectations for performance and fully demonstrates most or all competencies. This rating is the rigorous, expected performance level for most experienced teachers.</p>	<p><b>Accomplished:</b></p> <p>A rating of <i>Accomplished</i> indicates that the teacher is a leader and model in the classroom, school, and district, exceeding expectations for performance. The teacher consistently strives to improve his or her instructional and professional practice and contributes to the school or district through the development and mentoring of colleagues.</p>
---	--	---	---

*The following guidance speaks to the Teacher Performance Rating component, utilizing the state model Teacher Performance Evaluation Rubric. The following is suggested step-by-step guidance for evaluators to review and analyze multiple data points that inform teacher performance ratings.*

**Step 1: Gather evidence**

**1a. Align evidence to each standard area.** Group the evidence you have collected from time in the classroom, conferences and everyday interactions with the teacher into the ten standard areas of performance described by the Teacher Performance Evaluation Rubric.

**1b. Be consistent in gathering, recording, and sharing detailed, factual evidence.** Capture enough detail to accurately but succinctly describe the event, interaction, or behavior factually (without implied judgment or opinion in the recording). Share the form with teachers throughout the year so that the information can be used as a basis for changes in practice.

**1c. Sort the evidence by standard area to determine where more information is needed.** As the year progresses, holes in evidence coverage across standard areas may emerge. If the evidence collected is organized by standard area after each interaction, it will be automatically sorted by standard area and missing evidence will be apparent. Keep these standard areas in mind during future interactions with the teacher, since all standard areas are important for effective teaching practice.

**Step 2: Issue a holistic performance rating**

**2a. Read all of the evidence collected up to that point within a standard area, looking for patterns.** For example, if a teacher talks about wanting to improve an instructional technique in a pre-conference, demonstrates that technique in the first formal classroom observation and an informal classroom “walk-through” and asks for

feedback on the technique in the post-conference, that teacher is displaying a pattern of devoting attention to a particular area of practice. Note these patterns and take them into consideration when issuing a rating.

**2b. Compare the evidence and patterns to the performance descriptors.** After becoming familiar with the rubric, start by re-reading all of the Skilled performance descriptors in a standard area. Does the evidence exemplify this level of performance? Whether yes or no, look at the Accomplished or Developing performance level descriptors as well, to decide if either of them better aligns with the available evidence. If the Developing descriptor seems to be an appropriate match to the evidence, also read the Ineffective descriptor carefully to consider whether any evidence is at this level.

**2c. Repeat the process above for each standard area, and then consider patterns of performance across standard areas.** Once you determine a rating for each standard area, based on the available evidence from multiple interactions, look at the larger picture of performance across all standard areas. Although all standard areas are important for effective teacher practice, you may find it appropriate to more strongly weight patterns of behavior in one standard area over another. For example, if the teacher demonstrates a pattern of Developing behavior in the standard areas of Classroom Environment and Resources but exhibits solidly Skilled patterns of behavior in the standard area of Knowledge of Students and Lesson Delivery, you may use your knowledge of the situation to make sense of this information, finding that performance in the former two areas inhibits performance in other areas. As another example, you may find that some of the lost instructional time observed within a classroom is offset by the teacher's intense attention to individual student needs demonstrated throughout the class time and elsewhere. In a different case, however, you might observe that a pattern of classroom management issues such as lost instructional time is significant enough to overshadow the teacher's Skilled performance in other categories. The key point is that no one standard area of performance should be considered in isolation, but should be analyzed in relation to all other areas of performance.

### **Step 3: Issue the end-of-year performance rating**

**3a. Consider all evidence from the year, paying attention to trends.** In order to issue a teacher's final performance rating for the year, return to the body of collected evidence rather than just the earlier standard area- or holistic ratings. Use the process outlined to reconsider the evidence in each standard area across the arc of the entire year, taking into account observations, all conferences, and daily interactions. During this step, it is particularly important to consider trends in the teacher's performance over time. Was the teacher consistent in his or her practice, did he or she improve, or did the teacher decline in one or more areas? If a pattern of evidence in a particular standard area displays a trend of behavior or practice, the evaluator may consider placing more emphasis on the area improvement or decline.

**3b. Consider minimum thresholds of competency.** Flag any instance of an Ineffective rating as you prepare to issue the final performance rating. While the example of Ineffective behavior should be examined within the entire context of the evidence collected for the teacher, consider that there are minimum thresholds of competency for each of the ten standard areas described in the Teacher Performance Evaluation Rubric. It is possible that a serious deficiency in one area can and should carry more weight than positive ratings in other areas. Rely on your professional judgment, supported by the evidence you have gathered, to decide if this evidence of ineffective practice is grounds to issue a final Ineffective rating, taking into account how detrimental the displayed deficiency is to the teacher's classroom, colleagues and school as a whole.

**3c. Issue the final performance rating, summarize the supporting evidence and offer areas of reinforcement and refinement.** Complete the performance rating process by documenting the final teacher performance rating. Support your rating with evidence from formal and informal observations, artifacts provided by the teacher, and other appropriate evidence collected throughout the evaluation cycle. Provide succinct, targeted feedback on what professional growth needs to occur so that teachers have a clear understanding of the path to continuous growth and improvement and have concrete examples of supports that will help them improve practice.